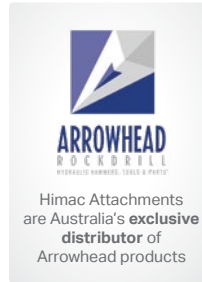


Vibratory Plate Compactor

EXCAVATOR



Must be operated with Case Drain

FEATURES

- » Unique 'V' profile, designed for soil / hard-core compaction and backfill trench compaction
- » Includes hoses and couplings
- » Incredible British build quality

SUITS MACHINES

1 - 9 T

RECOMMENDED FLOW

35 - 100 LPM

SCAN
FOR
MORE
INFO



CODE	PLATE SIZE	MACHINE	REQUIRED FLOW	DESCRIPTION	WEIGHT	PRICING
ACP200X	200 x 510	1 - 3 T	27 - 38 LPM	Vibratory Plate Compactor	135 kg	GET QUOTE
ACP350X	290 x 660	2 - 5.5 T	38 - 46 LPM		230 kg	
ACP550X	445 x 760	5 - 9 T	57 - 68 LPM		400 kg	



» **Hard Work Made Easy**

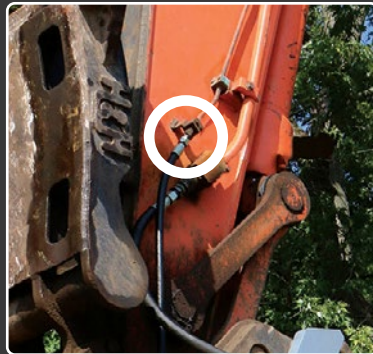
☎ **1800 888 114** 📍 **himac.com.au**

Vibratory Plate Compactor

GALLERY



Case Drain Lines



Identifying your case drain line

These images show the case drain port on skid steer and excavator models



What is a case drain line?

All Himac hydraulic attachments that operate at high pressure / high speed require a **case drain line (CDL)** to be fitted. Sometimes referred to as a third line, the CDL will relieve any excess pressure in the hydraulic motor casing and drain it back to the reservoir via a hose plumbed directly to the hydraulic tank.

Without a properly installed CDL, the extra pressure could blow a seal (extrude) which will in almost all cases irreparably damage the hydraulic motor, whilst also putting the host machine at risk of oil contamination.

A CDL can also increase the efficiency of your hydraulic system as it will lower the back pressure on the tank line. Each Himac CDL is supplied with a 3/8" Female Flat Face Coupling as standard (other standard couplings available on request).

How important is a case drain line?

Having a CDL fitted and operating properly is extremely important. Not only is it important for the longevity of your attachment, but will protect your machine's internal hydraulic system from contamination.

All Himac Attachments supplied with a case drain hose **MUST** be operated with the case drain hose properly installed to be eligible for warranty.

I don't have a case drain line on my machine - can I still buy a Himac Slasher?

Case drain lines are fitted from factory on almost all modern machines. Some older models won't have a CDL fitted to them. Luckily a CDL can be easily retro-fitted to your machine by your local hydraulic supplier.

A CDL can be routed parallel to existing feed and return lines on your machine arms and directly back to the reservoir (it is extremely important that the CDL feeds directly back to the reservoir on its own dedicated line, NOT plumbed back into the return hose).

The CDL should be connected to the reservoir through dedicated ports. This port would ideally be connected to a drop-pipe inside the reservoir that extends below minimum fluid level.

Not sure if you have a case drain line on your machine?

Contact our knowledgeable and friendly team at **1800 888 114**.



› **Hard Work Made Easy**

☎ **1800 888 114** 🌐 **himac.com.au**