

Heavy Duty Slasher

SKID STEER



Must be operated with Case Drain

FEATURES

- » Ideal model for grass slashing
- » 6 mm slasher deck with fork pockets
- » Heavy duty twin blade carrier
- » Safety chains fitted, run down protection
- » Aussie-made worksafe approved design

CUTTING CAPACITY

3" Diameter

MAX CUTTING WIDTH

1830 mm

SCAN
FOR
MORE
INFO



GET QUOTE

CODE	DESCRIPTION	CUT WIDTH	OVERALL WIDTH	FLOW RANGE	SUITABILITY	WEIGHT	PRICING	
HS1330	4 ft (50") Slasher - PT30	1280 mm	1360 mm	40 - 75 LPM	< 40 HP	285 kg	GET QUOTE	
HS13SDK	4 ft (50") Slasher - SDK4 / 5 / 7					280 kg		
HS13BC	4 ft (50") Slasher - Bobcat / S70 / 463					285 kg		
HS13UN	4 ft (50") Slasher	1280 mm	1360 mm	40 - 75 LPM	40 + HP	290 kg		
HS15UN	5 ft (60") Slasher	1500 mm	1600 mm	40 - 95 LPM		440 kg		
HS16UN	5.5 ft (63") Slasher	1600 mm	1710 mm	45 - 120 LPM		530 kg		
HS18UN	6 ft (72") Slasher	1830 mm	1940 mm	50 - 110 LPM		645 kg		
HS18HFUN	6 ft (72") Slasher - High Flow			111 - 130 LPM		650 kg		
A30	Replacement Slasher Blade							
HMSBOLT	Replacement Bolt for Slasher Blade							

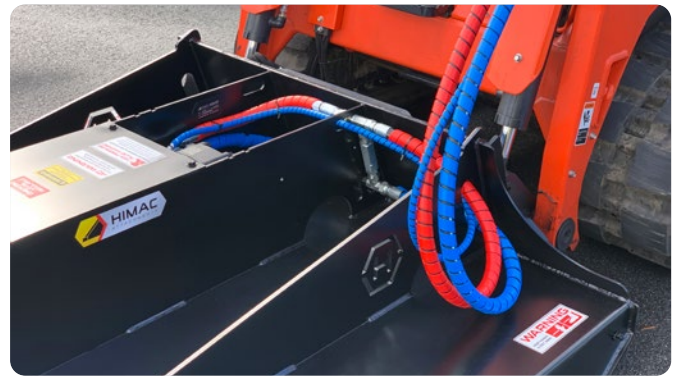
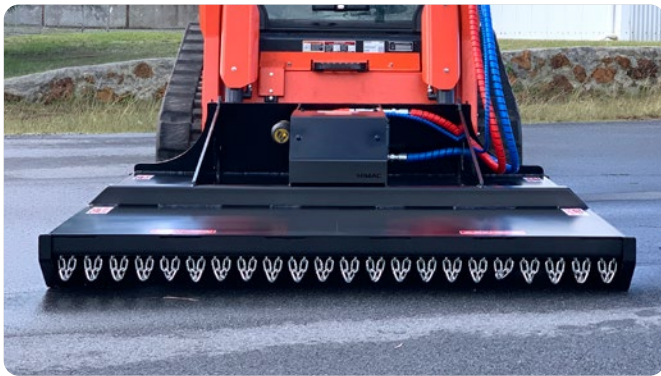


Hard Work Made Easy

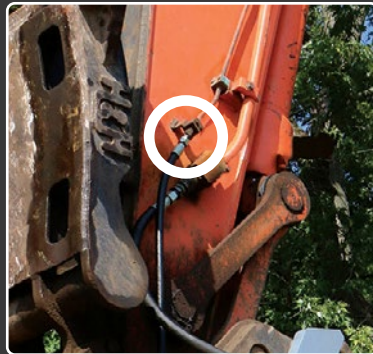
1800 888 114 himac.com.au

Heavy Duty Slasher

GALLERY



Case Drain Lines



Identifying your case drain line

These images show the case drain port on skid steer and excavator models



What is a case drain line?

All Himac hydraulic attachments that operate at high pressure / high speed require a **case drain line (CDL)** to be fitted. Sometimes referred to as a third line, the CDL will relieve any excess pressure in the hydraulic motor casing and drain it back to the reservoir via a hose plumbed directly to the hydraulic tank.

Without a properly installed CDL, the extra pressure could blow a seal (extrude) which will in almost all cases irreparably damage the hydraulic motor, whilst also putting the host machine at risk of oil contamination.

A CDL can also increase the efficiency of your hydraulic system as it will lower the back pressure on the tank line. Each Himac CDL is supplied with a 3/8" Female Flat Face Coupling as standard (other standard couplings available on request).

How important is a case drain line?

Having a CDL fitted and operating properly is extremely important. Not only is it important for the longevity of your attachment, but will protect your machine's internal hydraulic system from contamination.

All Himac Attachments supplied with a case drain hose **MUST** be operated with the case drain hose properly installed to be eligible for warranty.

I don't have a case drain line on my machine - can I still buy a Himac Slasher?

Case drain lines are fitted from factory on almost all modern machines. Some older models won't have a CDL fitted to them. Luckily a CDL can be easily retro-fitted to your machine by your local hydraulic supplier.

A CDL can be routed parallel to existing feed and return lines on your machine arms and directly back to the reservoir (it is extremely important that the CDL feeds directly back to the reservoir on its own dedicated line, NOT plumbed back into the return hose).

The CDL should be connected to the reservoir through dedicated ports. This port would ideally be connected to a drop-pipe inside the reservoir that extends below minimum fluid level.

Not sure if you have a case drain line on your machine?

Contact our knowledgeable and friendly team at **1800 888 114**.