

Mulching Slasher

40+ HP SKID STEER



Must be operated
with Case Drain

UNIVERSAL
MOUNT
OTHERS AVAILABLE



FEATURES

- » Great for large volume pest plants like Lantana
- » Reinforced slasher deck with fork pockets
- » Extreme duty 4 blade carrier with serrated edges
- » Aus-made open front design for large volume
- » Safety chains fitted, worksafe approved

CUTTING CAPACITY

4" Diameter

MAX CUTTING WIDTH

1830 mm

SCAN
FOR
MORE
INFO



CODE	DESCRIPTION	CUTTING WIDTH	OVERALL WIDTH	FLOW RANGE	WEIGHT	PRICING
OFS15UN	5 ft (60") Open Front Slasher	1500 mm	1606 mm	40 - 95 LPM	525 kg	GET QUOTE
OFS16UN	5.5 ft (63") Open Front Slasher	1600 mm	1706 mm	45 - 120 LPM	575 kg	
OFS18UN	6 ft (72") Open Front Slasher	1830 mm	1916 mm	50 - 110 LPM	635 kg	
OFS18HFUN	6 ft (72") Open Front Slasher - High Flow			111 - 130 LPM	635 kg	
A30	Replacement Slasher Blade					
HMSBOLT	Replacement Bolt for Slasher Blade					



Hard Work Made Easy

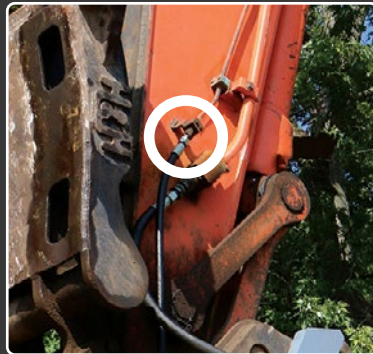
1800 888 114 himac.com.au

Mulching Slasher

GALLERY



Case Drain Lines



Identifying your case drain line

These images show the case drain port on skid steer and excavator models



What is a case drain line?

All Himac hydraulic attachments that operate at high pressure / high speed require a **case drain line (CDL)** to be fitted. Sometimes referred to as a third line, the CDL will relieve any excess pressure in the hydraulic motor casing and drain it back to the reservoir via a hose plumbed directly to the hydraulic tank.

Without a properly installed CDL, the extra pressure could blow a seal (extrude) which will in almost all cases irreparably damage the hydraulic motor, whilst also putting the host machine at risk of oil contamination.

A CDL can also increase the efficiency of your hydraulic system as it will lower the back pressure on the tank line. Each Himac CDL is supplied with a 3/8" Female Flat Face Coupling as standard (other standard couplings available on request).

How important is a case drain line?

Having a CDL fitted and operating properly is extremely important. Not only is it important for the longevity of your attachment, but will protect your machine's internal hydraulic system from contamination.

All Himac Attachments supplied with a case drain hose **MUST** be operated with the case drain hose properly installed to be eligible for warranty.

I don't have a case drain line on my machine - can I still buy a Himac Slasher?

Case drain lines are fitted from factory on almost all modern machines. Some older models won't have a CDL fitted to them. Luckily a CDL can be easily retro-fitted to your machine by your local hydraulic supplier.

A CDL can be routed parallel to existing feed and return lines on your machine arms and directly back to the reservoir (it is extremely important that the CDL feeds directly back to the reservoir on its own dedicated line, NOT plumbed back into the return hose).

The CDL should be connected to the reservoir through dedicated ports. This port would ideally be connected to a drop-pipe inside the reservoir that extends below minimum fluid level.

Not sure if you have a case drain line on your machine?

Contact our knowledgeable and friendly team at **1800 888 114**.