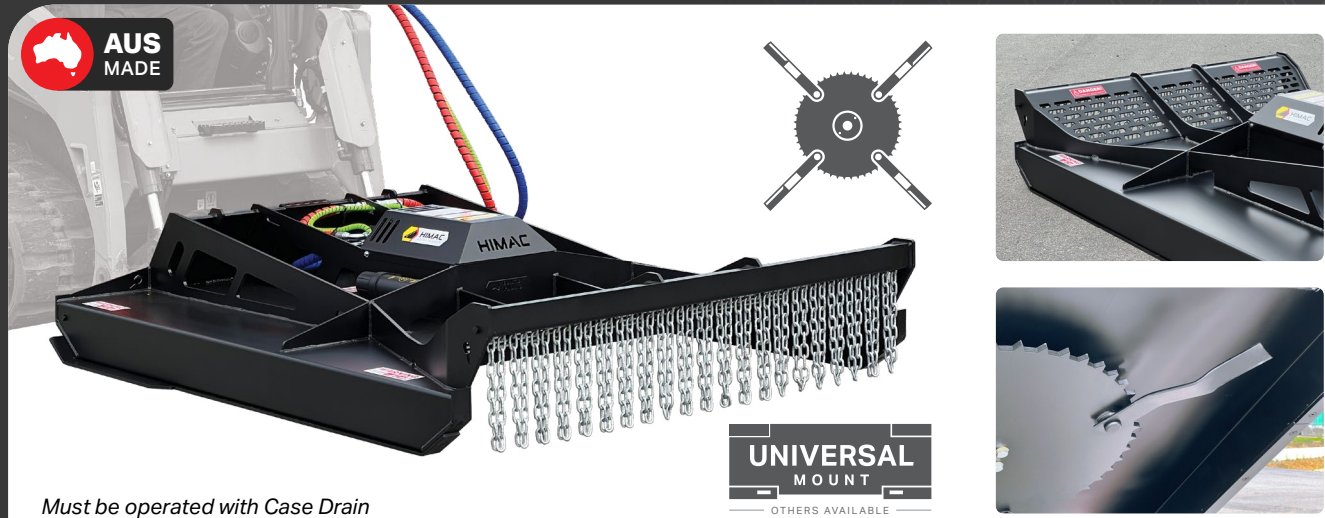


# Open Front Slasher

40+ HP SKID STEER



Must be operated with Case Drain

## FEATURES

- » Reinforced open design, great for large volume pest plants like Lantana
- » Extreme duty serrated 4 blade carrier
- » Extra wide replaceable bolt-on skids
- » Hydraulic run down protection

CUTTING CAPACITY

**4" Diameter**

MAX CUTTING WIDTH

**1800 mm**

SCAN  
FOR  
MORE  
INFO



**GET QUOTE**

CODE	DESCRIPTION	MOTOR	REQUIRED FLOW	CUT WIDTH	WEIGHT	PRICING
SLF15UNIVL80	5 ft (60") Open Front Slasher	80cc	40 - 54 LPM	1500 mm	525 kg	GET QUOTE
SLF15UNIVL100		100cc	55 - 65 LPM			
SLF15UNIVL125		125cc	68 - 75 LPM			
SLF15UNIVL160		160cc	80 - 95 LPM			
SLF16UNIVL80	5.5 ft (63") Open Front Slasher	80cc	40 - 50 LPM	1600 mm	575 kg	
SLF16UNIVL100		100cc	56 - 63 LPM			
SLF16UNIVL125		125cc	60 - 75 LPM			
SLF16UNIVL160		160cc	76 - 100 LPM			
SLF16UNIVL200		200cc	101 - 120 LPM			
SLF16UNIVL250		250cc	120 - 125 LPM			
SLF18UNIVL100	6 ft (72") Open Front Slasher	100cc	48 - 55 LPM	1800 mm	635 kg	
SLF18UNIVL125		125cc	58 - 67 LPM			
SLF18UNIVL160		160cc	68 - 87 LPM			
SLF18UNIVL200		200cc	88 - 110 LPM			
SLF18UNIVL200		250cc	105 - 125 LPM			
BLADESL	Replacement Slasher Blade					
BOLTSL	Replacement Bolt for Slasher Blade					



Hard Work Made Easy



1800 888 114



himac.com.au

# Open Front Slasher

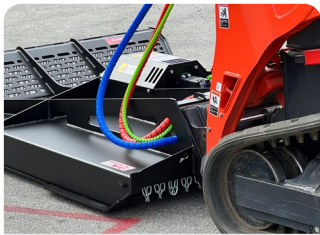
GALLERY





# Open Front Slasher

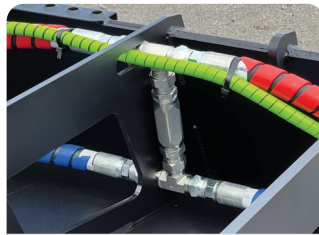
## FEATURES



Increased crowd for safer operation, inspection and servicing



Rear fork pockets to ensure safe loading and unloading of slasher



Hydraulic run down protection - anti-cavitation valve



Reinforced open design for large volume slashing



Extra wide replaceable bolt-on skids increase flotation across terrain



4 built-in tie down points for quick and easy transportation



Serrated round blade carrier with increased mass and balance for smoother cut



Forged heavy duty blade bolts, larger than the industry standard



Hard Work Made Easy

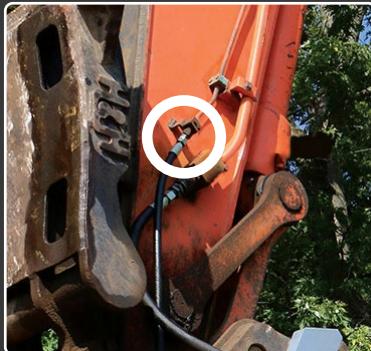


1800 888 114



himac.com.au

# Case Drain Lines



## Identifying your case drain line

These images show the case drain port on skid steer and excavator models



## What is a case drain line?

All Himac hydraulic attachments that operate at high pressure / high speed require a **case drain line (CDL)** to be fitted. Sometimes referred to as a third line, the CDL will relieve any excess pressure in the hydraulic motor casing and drain it back to the reservoir via a hose plumbed directly to the hydraulic tank.

Without a properly installed CDL, the extra pressure could blow a seal (extrude) which will in almost all cases irreparably damage the hydraulic motor, whilst also putting the host machine at risk of oil contamination.

A CDL can also increase the efficiency of your hydraulic system as it will lower the back pressure on the tank line. Each Himac CDL is supplied with a 3/8" Female Flat Face Coupling as standard (other standard couplings available on request).

## How important is a case drain line?

Having a CDL fitted and operating properly is extremely important. Not only is it important for the longevity of your attachment, but will protect your machine's internal hydraulic system from contamination.

All Himac Attachments supplied with a case drain hose **MUST** be operated with the case drain hose properly installed to be eligible for warranty.

## I don't have a case drain line on my machine - can I still buy a Himac Slasher?

Case drain lines are fitted from factory on almost all modern machines. Some older models won't have a CDL fitted to them. Luckily a CDL can be easily retro-fitted to your machine by your local hydraulic supplier.




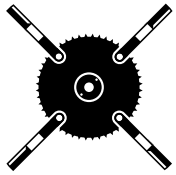
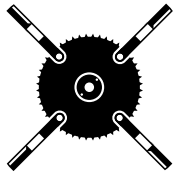
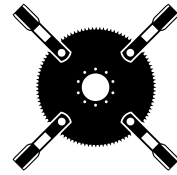
A CDL can be routed parallel to existing feed and return lines on your machine arms and directly back to the reservoir (it is extremely important that the CDL feeds directly back to the reservoir on its own dedicated line, NOT plumbed back into the return hose).

The CDL should be connected to the reservoir through dedicated ports. This port would ideally be connected to a drop-pipe inside the reservoir that extends below minimum fluid level.

## Not sure if you have a case drain line on your machine?

Contact our knowledgeable and friendly team at **1800 888 114**.

# Slasher Application Guide

	EXTREME DUTY			OPEN FRONT			BRUSH CUTTER
Design							
Blade Carrier							
Carrier Thickness	<b>16 mm</b> Solid Circular Carrier			<b>16 mm</b> Solid Circular Carrier			<b>20 mm</b> Solid Circular Carrier
Carrier Serrated?	✓			✓			✓
Blades	<b>4 Blade</b> Regular			<b>4 Blade</b> Regular			<b>4 Blade</b> Double edge
Deck Type	<b>Reinforced</b> 6 mm thick			<b>Reinforced</b> 6 mm thick			<b>Reinforced</b> 6 mm thick
Push Bar?	✗			✓			✓
Open Front?	✗			✓			✓
Max Cut Capacity Thickness of growth	<b>3.5 inch</b> 89 mm			<b>4 inch</b> 101 mm			<b>5 inch</b> 127 mm
Flow Suitability	<b>40 - 130 LPM</b>			<b>40 - 130 LPM</b>			<b>90 - 160 LPM</b>
Cutting Widths	1500 mm	1600 mm	1830 mm	1500 mm	1600 mm	1830 mm	<b>1830 mm</b>
Grass	Great			Great			OK
Scrub	Great			Great			Great
Dense Bush	Good			Great			Great
Small - Med Trees	Good			Good			Great
Thick Regrowth	OK			Good			Great