

SKID STEER Aluminium Ramps

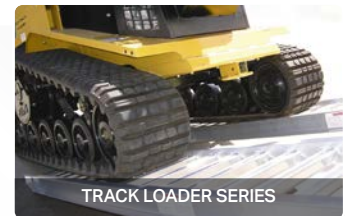


FEATURES

- » Tested and certified
- » Securing pins included
- » Models to suit pneumatic tyres, steel tracks, rubber pads and rubber tracks

MAX LENGTH
3.7 m

MAX CAPACITY
11,500 kg



| SERIES | CODE | RATING | RAMP MASS | RAMP LENGTH | TRACK (INTERNAL) | RAMP WIDTH | RAMP DEPTH | PRICING |
|---|-----------|----------|-----------|-------------|------------------|------------|------------|------------------|
| RUBBER (Pneumatic Tyres) | 7/3033R | 3000 kg | 27 kg | 3.3 m | 300 mm | 400 mm | 110 mm | GET QUOTE |
| | 7/3635R | 3600 kg | 33 kg | 3.5 m | 350 mm | 450 mm | 120 mm | |
| | 7/4536R | 4500 kg | 37 kg | 3.6 m | 375 mm | 510 mm | 125 mm | |
| | 7/6036R | 6000 kg | 51 kg | 3.6 m | 500 mm | 610 mm | 165 mm | |
| TRACK (Steel and Rubber Tracks) | 7/4536T | 4500 kg | 42 kg | 3.6 m | 400 mm | 510 mm | 125 mm | |
| | 7/6036T | 6000 kg | 52 kg | 3.6 m | 500 mm | 610 mm | 165 mm | |
| | 7/7536T | 7500 kg | 57 kg | 3.6 m | 500 mm | 600 mm | 184 mm | |
| | 7/9037T | 9000 kg | 74 kg | 3.7 m | 500 mm | 640 mm | 200 mm | |
| | 7/11537T | 11500 kg | 88 kg | 3.7 m | 500 mm | 660 mm | 180 mm | |
| TRACK LOADER (Pneumatic Tyres, Track Machines and Skid Steers) | 7/3635PT | 3600 kg | 41 kg | 3.5 m | 450 mm | 550 mm | 120 mm | |
| | 7/4536PT | 4500 kg | 46 kg | 3.6 m | 500 mm | 610 mm | 125 mm | |
| | 7/4536PTW | 4500 kg | 48 kg | 3.6 m | 550 mm | 660 mm | 125 mm | |
| | 7/6036PT | 6000 kg | 51 kg | 3.6 m | 500 mm | 610 mm | 165 mm | |