

Ends June 30

# Diminish Your Tax Bill

30  
-  
50  
HP

**2847Nm**  
DRIVE, HITCH,  
300mm AUGER

~~\$3,242~~  
**\$2,665**  
+GST

45  
-  
80  
HP

**3614Nm**  
DRIVE, HITCH,  
300mm AUGER

~~\$3,428~~  
**\$2,750**  
+GST

60  
-  
100  
HP

**4499Nm**  
DRIVE, HITCH,  
300mm AUGER

~~\$3,448~~  
**\$2,987**  
+GST



## Auger Drive Packages

Make the most of tax time and lock on a HimaC **Auger Drive** with **Hitch** and **300mm Tungsten Auger**. Choose from 3 Packages to suit your Skid Steer / Track Machine.

Plus if you order one of these Auger Packages you get **10% OFF A SECOND AUGER!**

**+ 10% OFF**  
A SECOND AUGER

MUST ORDER WITH  
PACKAGE FOR  
10% DISCOUNT

 > Call **1800 888 114**

## Instant Asset Write-Off

# BOOSTED

If your business turnover\* is under \$50 million, you can instantly deduct the value of business purchases **up to \$30,000 each** from your taxable income. Simply... **YOU PAY LESS TAX!**

Visit [himac.com.au/taxbreak](http://himac.com.au/taxbreak)

\*AGGREGATE ANNUAL T/O



» HARD WORK  
MADE EASY »

 **1800 888 114**

 [himac.com.au](http://himac.com.au)





# All Tax Break Approved



## Rake Bucket Grapple

The Himac **Rake Grapple** is incredibly versatile being suited to construction clean up, clearing fence lines, sifting through debris, waste management and more. Other sizes available.

HANDLES LARGE / UNEVEN LOADS

TWIN ROW REINFORCING SPACERS

HIGH TENSILE SOLID ROUND BARS



☎ > 1800 888 114 by June 30

**1665mm Rake Grapple**  
— Normally \$5,520 —  
**\$4,986**  
+ GST  
**SAVE \$534**

**1825mm Rake Grapple**  
— Normally \$5,605 —  
**\$5,064**  
+ GST  
**SAVE \$541**



SIFT AWAY UNWANTED DIRT

TRANSPORT HARD-TO-HANDLE LOADS

SUITED TO A RANGE OF MATERIALS



**1675mm**  
\$5,020  
**\$4,624**  
+GST

**1830mm**  
\$5,170  
**\$4,765**  
+GST

**1980mm**  
\$5,620  
**\$5,128**  
+GST

## Demolition Grapple

If your site is riddled with rubble and scrap like a post-apocalyptic war zone, you need the **Demolition Grapple** - a serious clean-up tool with extra strong base and dual grapple arms.

☎ > 1800 888 114 by June 30



Other sizes available

**1920mm**  
\$5,280  
**\$4,765**  
+GST

**2135mm**  
\$5,620  
**\$5,120**  
+GST

## Brush Grapple

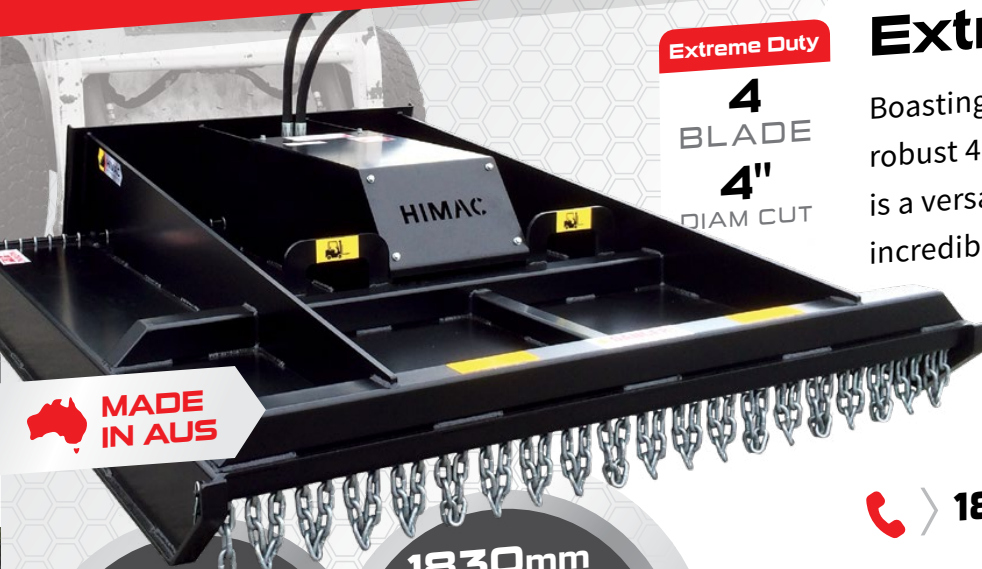
The unique angled front edge design of the **Brush Grapple** tyres allow you to take hold of larger volumes of vegetation without digging in and disturbing the ground.

☎ > 1800 888 114 by June 30

Call Himac before June 30 ☎ 1800 888 114 🌐 himac.com.au



# Slashers Get **SLASHED**



Extreme Duty

**4**  
BLADE  
**4"**  
DIAM CUT

## Extreme Duty Slasher

Boasting a 4" diameter cutting capacity and robust 4 blade carrier, the **Extreme Duty Slasher** is a versatile all-rounder that's packed with incredible safety and performance features.

CUT SMALL / MED TREES  
CREATE FIRE BREAKS  
TACKLE THICK VEGETATION

☎ > **1800 888 114** by June 30

**1600mm**  
CUT WIDTH  
— Normally \$7,360 —  
**\$6,730**  
+ GST  
**SAVE \$630**

**1830mm**  
CUT WIDTH  
— Normally \$7,765 —  
**\$7,220**  
+ GST  
**SAVE \$545**

STRONG 4 BLADE CARRIER

CONFIDENTLY CLEAR SCRUB / TREES

TACKLE THICKER VEGETATION



Heavy Duty

**2**  
BLADE  
**3"**  
DIAM CUT

**1500mm**  
CUT WIDTH  
\$5,770  
**\$5,380**  
+GST

**1600mm**  
CUT WIDTH  
\$6,345  
**\$5,875**  
+GST

**1830mm**  
CUT WIDTH  
\$6,950  
**\$6,460**  
+GST

## Heavy Duty Slasher

Ideal for grass slashing, the 2 Blade **Heavy Duty Slasher** delivers speed and accuracy with high speed hydraulics, run down clutch protection, fitted safety chains and more.

☎ > **1800 888 114** by June 30



Brushcutter

**4**  
BLADE  
**5"**  
DIAM CUT

**1830mm**  
CUT WIDTH  
**\$10,750**  
+GST

## Extreme Brushcutter

With four double-edged blades, high torque direct drive motor, reinforced deck and push bar... the **Extreme Brushcutter** tears through scrub, bushes and other vegetation with ease.

☎ > **1800 888 114** by June 30

Call Himac before June 30 ☎ 1800 888 114 ➡ himac.com.au



# BONUS SKID SHOES

**\$760 VALUE  
FOR FREE**

**2100mm  
Angle/Tilt Blade  
\$7,385  
+ GST**

**Bonus Skid  
Shoes**

**2400mm  
Angle/Tilt Blade  
\$8,180  
+ GST**

**Bonus Skid  
Shoes**

**BOLT-ON INSTALL  
ADJUSTABLE DEPTH GUIDE  
PREVENTS BLADE DIVING  
IMPROVES YOUR FINISH**

**WHY USE THE  
SKID SHOES?**



## BUCKET BROOM



**INC UN SKID  
STEER MOUNT**

Collect material while sweeping streets, curbsides and more with the **Bucket Broom** - feat long-life single piece PPN brush, motor protection, fast height adjust, reinforced base and more

~~\$5,390~~  
**\$4,985**  
+GST  
**1.8m Work  
Width**



## CHAIN TRENCHER



**INC UN SKID  
STEER MOUNT**

For clean trenches that are cut with precision, look no further than the **Chain Trencher** - features high torque planetary drive, discharge auger, side shift and scraper bar

~~\$5,362~~  
**\$4,430**  
+GST  
**900mm  
Depth**



## RIPPER



**INC UN SKID  
STEER MOUNT**

Prepare the earth quick smart with the extreme duty **Ripper** - features reversible tynes and reinforced mount

~~\$1,690~~  
**\$1,690**  
+GST  
**5 Tyne**

~~\$2,290~~  
**\$2,290**  
+GST  
**7 Tyne**



## SELF-LOADING MIXER



**INC UN SKID  
STEER MOUNT**

Scoop 'n' mix with the innovative **Self-Loading Mixer Bucket** - includes spill guard, bag breaker, spiral paddles, unloading pipe, hydraulic bottom opening and more

~~\$8,780~~  
**\$7,980**  
+GST  
**350 L**

**Call Himac before June 30**



**1800 888 114**



**himac.com.au**

PRICES EX GST - VALID TIL JUNE 30, 2019



# DO IT ALL

with a **STUMP BUCKET**

 **MADE IN AUS**



REMOVE STUMPS EASILY  
TRENCHES / FOOTINGS  
PERFORM DEMOLITION  
PULL UP ASPHALT

SEE IT IN ACTION  
[himac.com.au/sb](http://himac.com.au/sb)

**STUMP BUCKET**

– Normally \$1,850 –

**\$1,735**

+ GST



**Ends June 30**



## PUSH RAKE



Himac's flagship **Push Rake** gives you effective vegetation control instantly - high grade tynes and side wing design

  INC UN SKID STEER MOUNT

~~\$3,387~~  
**\$2,830**  
+GST  
**2.1m**



~~\$3,468~~  
**\$2,980**  
+GST  
**2.4m**



## STUMP GRINDER



With an abrasion-resistant AR400 steel build and direct flow hydraulics, the **Stump Grinder** unleashes powerful stump grinding while also handling gravel, stones and metal

  INC UN SKID STEER MOUNT



~~\$10,240~~  
**\$6,880**  
+GST  
**\$3,360 OFF**



## TREE PULLER



Pull out small trees, posts, vines, box thorn and more with the grip 'n' rip action of the **Tree Puller** - boasts tough hyd clamping, max 12" diam limb size and integrated teeth

  INC UN SKID STEER MOUNT

~~\$3,420~~  
**\$2,980**  
+GST  
**SAVE \$440**



## STUMP GRAPPLE



Our **Stump Grapple** blends multi-use functionality of the Stump Bucket with the power of a hydraulic arm - features an impressive 1200mm max opening for tall and large loads

  INC UN SKID STEER MOUNT

~~\$3,490~~  
**\$3,290**  
+GST  
**SAVE \$200**

PRICES EX GST - VALID TIL JUNE 30, 2019

Call Himac before June 30  1800 888 114  [himac.com.au](http://himac.com.au)



# BIGGER AND BETTER



50 x 50mm SOLID TYNES  
1570mm MAX OPENING  
HIGH PRESSURE HYDRAULICS  
DIG OUT STONES / ROCKS

**2100mm  
Power Grapple**  
- Normally \$11,930 -  
**\$10,970**  
+ GST  
**SAVE  
\$960**

**2400mm  
Power Grapple**  
- Normally \$12,480 -  
**\$11,580**  
+ GST  
**SAVE  
\$900**

## Power Rake



2100mm ~~\$6,180~~ **\$5,880** + GST  
2400mm ~~\$6,730~~ **\$6,380** + GST

## Push Rake



2400mm ~~\$6,375~~ **\$5,880** + GST  
2800mm ~~\$6,987~~ **\$6,350** + GST

## Rake Sieve Bucket



2100mm ~~\$5,828~~ **\$5,324** + GST  
2400mm ~~\$6,174~~ **\$5,583** + GST

## Self-Loading Mixer



Scoop 'n' mix action  
600 litre capacity  
Inc hoses / couplings

~~\$13,830~~ + GST  
**\$12,930**

## Post Hole Package 60 - 110 LPM



Package: 5477 Nm Drive  
Telehandler Hitch  
300mm Tungsten Auger

~~\$5,180~~ + GST  
**\$4,340**

## Pallet Forks



3.0 T Lift ~~\$3,454~~ **\$2,883** + GST  
4.0 T Lift ~~\$3,740~~ **\$3,060** + GST

PRICES EX GST - VALID TIL JUNE 30, 2019

Call Himac before June 30 1800 888 114 [himac.com.au](http://himac.com.au)



# WHEELY TOUGH GEAR

 **MADE IN AUS**

63 x 63mm SOLID TYNES  
DIG OUT STONES / ROCKS  
EFFICIENT SIFTING ABILITY  
CLEAR FENCE LINES

**2400mm Power Rake**  
- Normally \$11,600 -  
**\$10,860**  
+ GST  
**SAVE \$740**

**2700mm Power Rake**  
- Normally \$12,180 -  
**\$11,380**  
+ GST  
**SAVE \$800**

**3000mm Power Rake**  
- Normally \$12,830 -  
**\$11,960**  
+ GST  
**SAVE \$870**



## PUSH RAKE



 INC LOADER HITCH

Featuring 32mm thick high grade tynes, our Wheel Loader **Push Rake** is a must-have vegetation control attachment

~~\$11,880~~  
**\$11,480**  
+GST  
**2.7m**



~~\$12,550~~  
**\$12,150**  
+GST  
**3m**



## POWER GRAPPLE



 INC LOADER HITCH

Raise the bar with the strength-focused **Power Grapple**; your Wheel Loader has never been more capable!

~~\$19,180~~  
**\$18,570**  
+GST  
**2.7m**



~~\$20,380~~  
**\$19,880**  
+GST  
**3m**



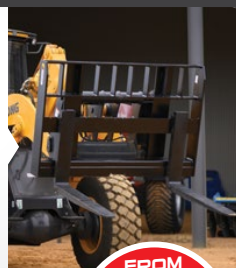
## PALLET FORKS



 INC LOADER HITCH


For reliable **Pallet Forks** that work harder for longer, consider our Wheel Loader range - quick adjust tyne design, available in lifting capacities from 3.5 Ton up to 8 Ton

**FROM 3.5 T**  
**\$4,560**  
+GST



## SELF-LOADING MIXER



 INC LOADER HITCH

Scoop 'n' mix with the innovative **Self-Loading Mixer Bucket** - includes spill guard, bag breaker, spiral paddles, unloading pipe, hydraulic bottom opening and more

~~\$16,990~~  
**\$15,600**  
+GST  
**700 L**



**ONLY 2 IN STOCK**

Prices shown include Quick Hitch Mount | Other Hitches - POA

Call Himac before June 30  1800 888 114  himac.com.au

PRICES EX GST - VALID TIL JUNE 30, 2019

Ends June 30

# EXCAVATOR Attachments

## Post Hole Package 1.5 - 3 T



1.5-3 T EXCAVATORS

Package: 2847 Nm Drive  
Double Pin Excavator Hitch  
200mm Tungsten Auger

~~\$3,030~~  
**\$2,580** + GST

## Post Hole Package 3 - 4.5 T



3-4.5 T EXCAVATORS

Package: 3614 Nm Drive  
Double Pin Excavator Hitch  
300mm Tungsten Auger

~~\$3,360~~  
**\$2,760** + GST

## Post Hole Package 5 - 8 T



5-8 T EXCAVATORS

Package: 6931 Nm Drive  
Double Pin Excavator Hitch  
300mm Tungsten Auger

~~\$4,950~~  
**\$4,245** + GST

## Clamp Grapple



INC HITCH

Multi-purpose dig / clamp  
Openings up to 1270mm  
Models for 2 - 8 T machines

Prices from  
**\$3,840** + GST

## Sieve Bucket



INC HITCH

Weld-on / Bolt-on Cut Edge  
High grade (400) tyres  
Models for 2 - 9 T machines

Prices from  
**\$1,890** + GST

## Tilt Bucket



INC HITCH

Hyd 45 deg tilt both ways  
Weld-on / Bolt-on Cut Edge  
Models for 1 - 8.5 T machines

Prices from  
**\$2,400** + GST

## GP Buckets



INC HITCH

400 grade rear / side strips  
Fitted teeth: 3, 4, 5 options  
Models for 1 - 9 T machines

Prices from  
**\$680** + GST

## Gummy Buckets

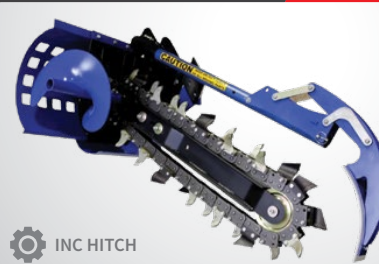


INC HITCH

400 grade rear / side strips  
Hardox grade cutting edge  
Models for 1 - 9 T machines

Prices from  
**\$600** + GST

## Chain Trencher



INC HITCH

900mm digging depth  
150mm combination chain  
Suits 2.5 - 4.8 T machines

~~\$5,480~~  
**\$4,685** + GST

Find out more about our expanding  
**Excavator Attachment** range today

[himac.com.au/ex](http://himac.com.au/ex)



HARD WORK  
MADE EASY

1800 888 114  
[himac.com.au](http://himac.com.au)